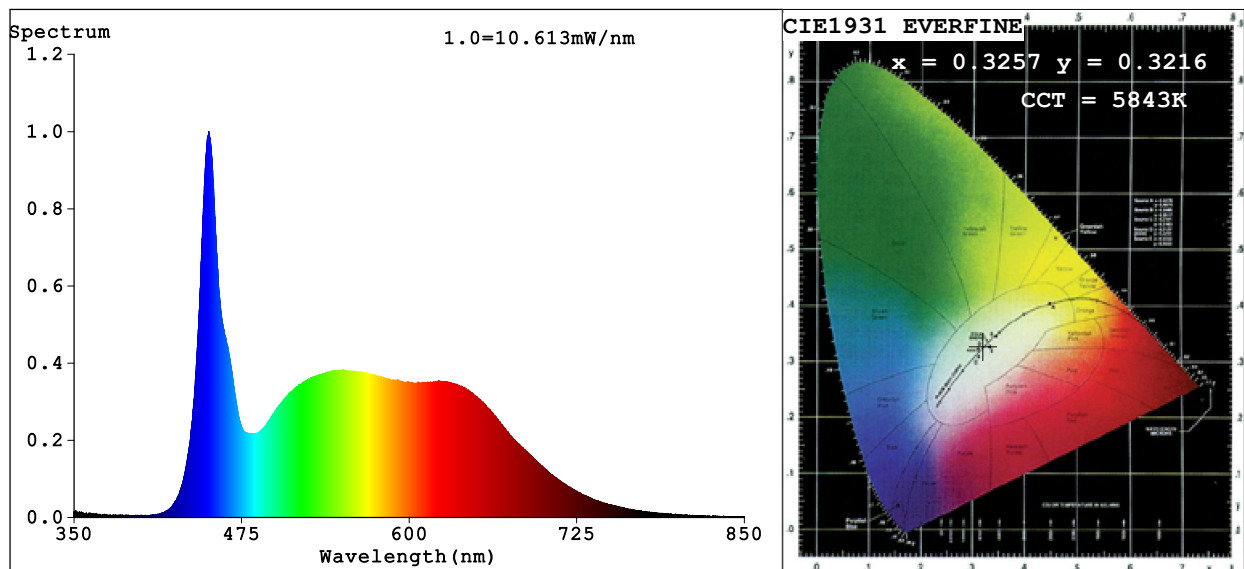


Spectrum Test Report



Color Parameters:

Chromaticity Coordinate: $x=0.3257$ $y=0.3216$ $u'=0.2099$ $v'=0.4662$

CCT=5843K (Duv=-0.0072) Dominant WL:Ld =463.0nm Purity=3.9%

Ratio:R=16.9% G=77.3% B=5.8%; Peak WL:Lp=450.5nm FWHM=18.5nm

Render Index:Ra=94.9 CRI=92.8 TM30:Rf=88 Rg=104

R1 =96 R2 =96 R3 =90 R4 =96 R5 =96 R6 =90 R7 =96

R8 =99 R9 =97 R10=89 R11=94 R12=69 R13=97 R14=94 R15=96

Photo Parameters:

Flux = 274.3 lm Eff. : 26.84 lm/W Fe = 1.028 W

Electrical parameters:

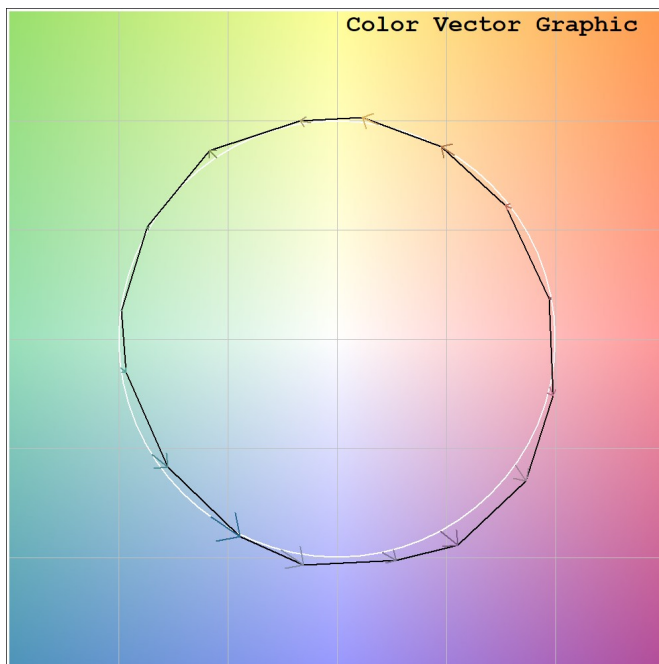
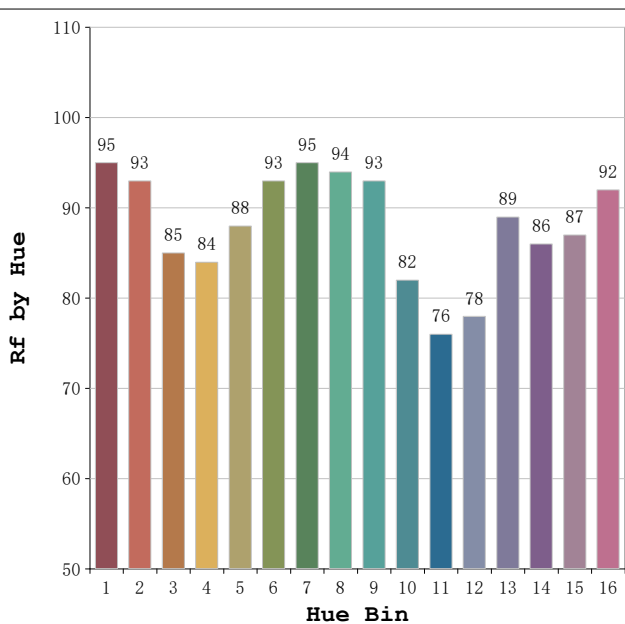
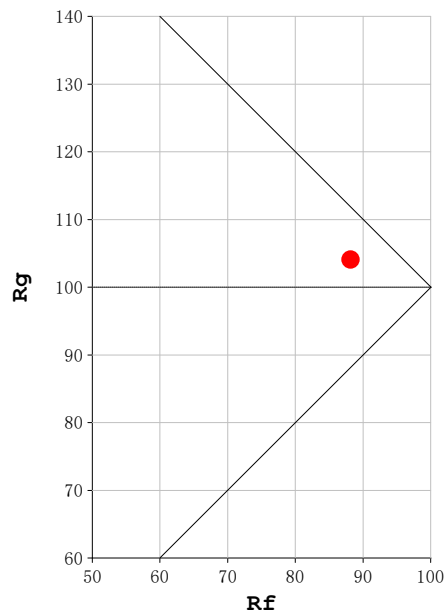
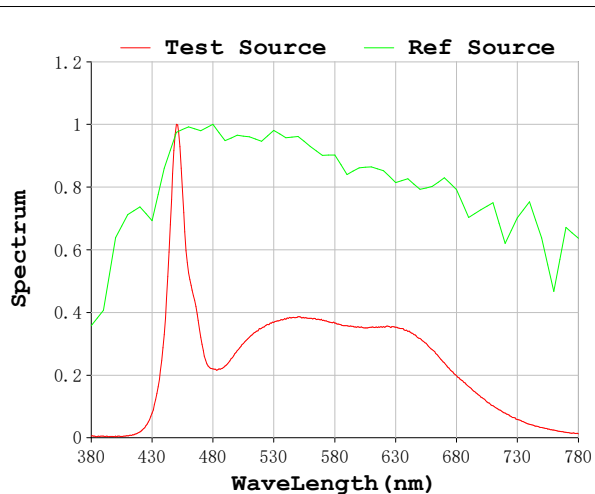
V = 23.998 V I = 0.4258 A P = 10.22 W PF = 1.000

Status: Integral T = 3864 ms Ip = 46816 (71%)

Model:Ecoled Africa Cut&connect
Tester:Sergio Carneros
Temperature:20Deg
Manufacturer:Luz negra

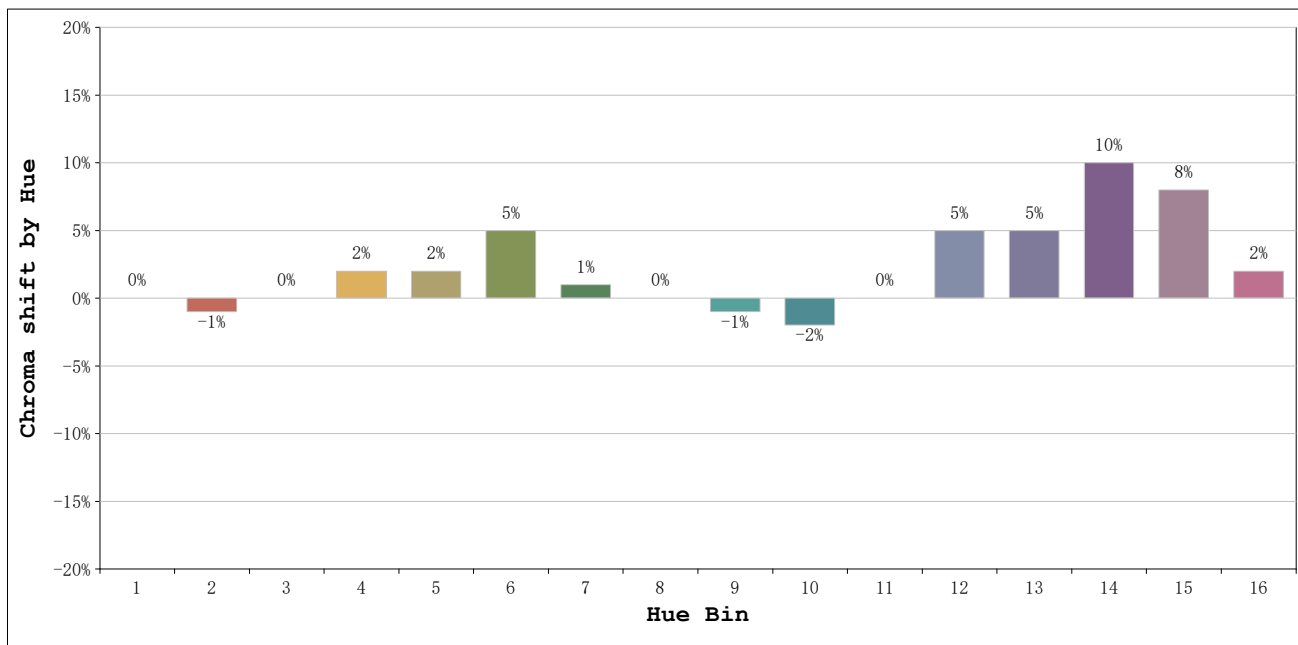
Number: 10.342
Date:2026-03-09 15:52:32
Humidity:50%
Remarks:100cm de neón

Rf: 88 **CCT: 5843 K** **u': 0.2099**
Rg: 104 **Duv: -0.0072** **v': 0.4662**



Model:Ecoled Africa Cut&connect
 Tester:Sergio Carneros
 Temperature:20Deg
 Manufacturer:Luz negra

Number: 10.342
 Date:2026-03-09 15:52:32
 Humidity:50%
 Remarks:100cm de neón



			Graphic shift(%)	
Hue Bin	Hue Angle	Rf	Chroma	Hue
1	0.0° - 22.5°	95	0	0
2	22.5° - 45.0°	93	-1	3
3	45.0° - 67.5°	85	0	7
4	67.5° - 90.0°	84	2	8
5	90.0° - 112.5°	88	2	5
6	112.5° - 135.0°	93	5	1
7	135.0° - 157.5°	95	1	0
8	157.5° - 180.0°	94	0	0
9	180.0° - 202.5°	93	-1	3
10	202.5° - 225.0°	82	-2	9
11	225.0° - 247.5°	76	0	16
12	247.5° - 270.0°	78	5	12
13	270.0° - 292.5°	89	5	6
14	292.5° - 315.0°	86	10	3
15	315.0° - 337.5°	87	8	-2
16	337.5° - 360.0°	92	2	-3

Model:Ecoled Africa Cut&connect
 Tester:Sergio Carneros
 Temperature:20Deg
 Manufacturer:Luz negra

Number: 10.342
 Date:2026-03-09 15:52:32
 Humidity:50%
 Remarks:100cm de neón